

# Installation of BOSS Linux 5.0

An Indian version of GNU Linux, BOSS Linux, is being promoted and distributed by the Centre for Development of Advanced Computing (C-DAC), Government of India. Like most other Linux distributions, BOSS Linux is also an open source operating system distributed under the GNU General Public License (GPL). It can be downloaded from the website <http://bosslinux.in/>.

The hardware requirements for installing the BOSS Linux 5.0 are as follows:

- Minimum of 5.0 GB of hard disk space
- 512 MB of RAM
- A DVD-ROM drive

You need to perform the following steps to install the BOSS Linux in your computer:

- 1 Insert BOSS Linux 5.0 CD/DVD in the CD/DVD ROM in your computer.

The BOSS GNU/LINUX installer screen appears, as shown in Figure 1:

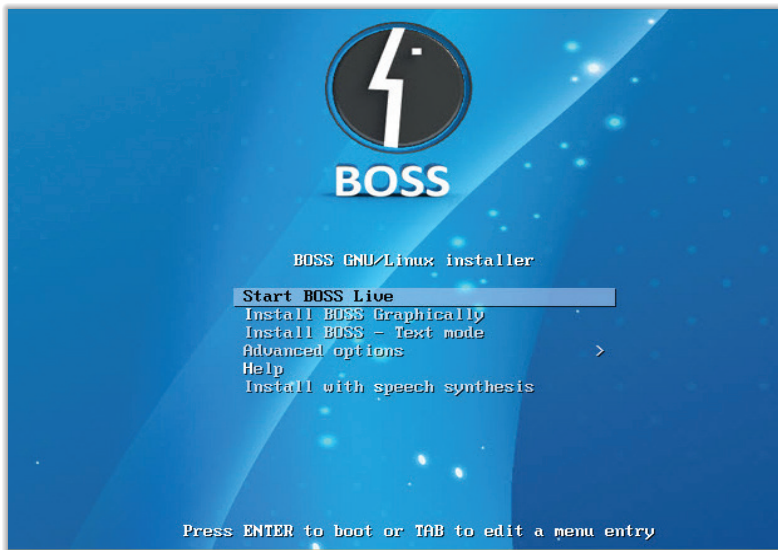
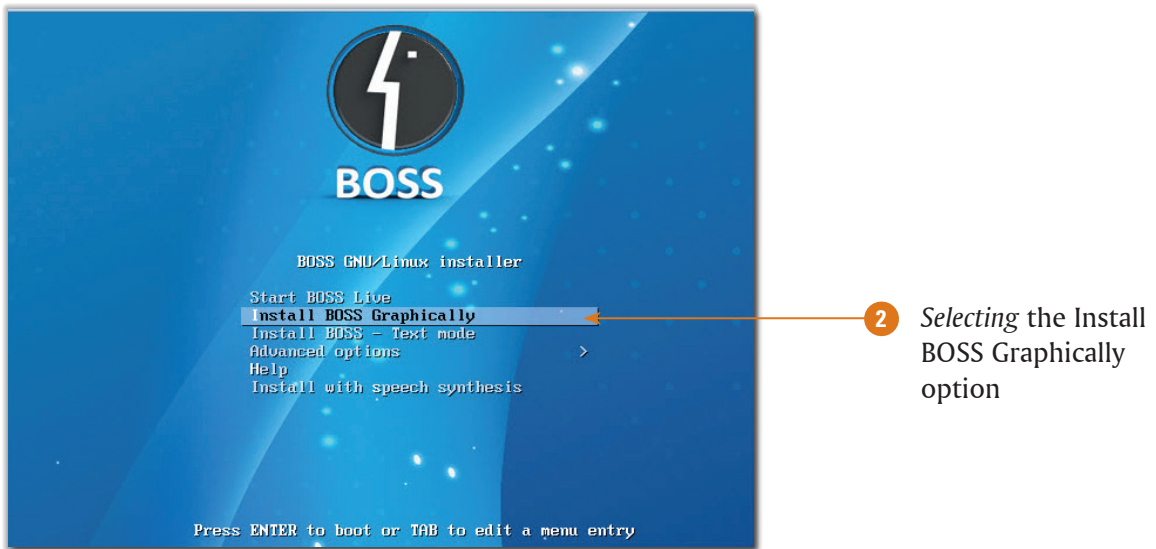


Figure 1: BOSS GNU/LINUX installer screen

- 2 Select the **Install BOSS Graphically** option in the BOSS GNU/LINUX installer screen, as shown in Figure 2:

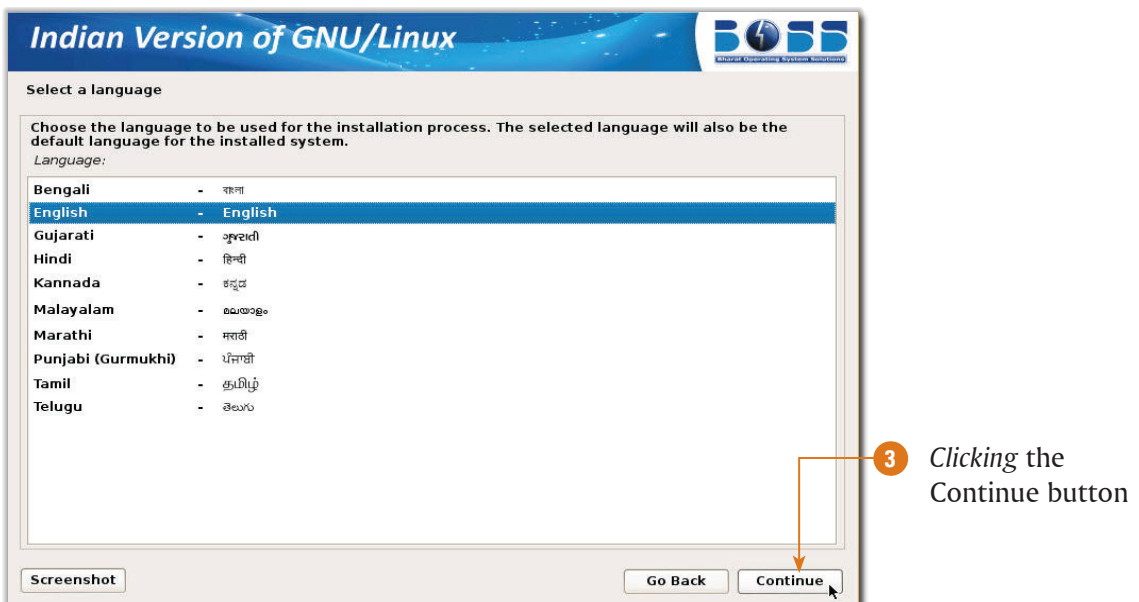


**Figure 2:** Select Install BOSS Graphically option

- 3 Press the **Enter** key.

The Select a language screen appears in which English is selected by default (Figure 3).

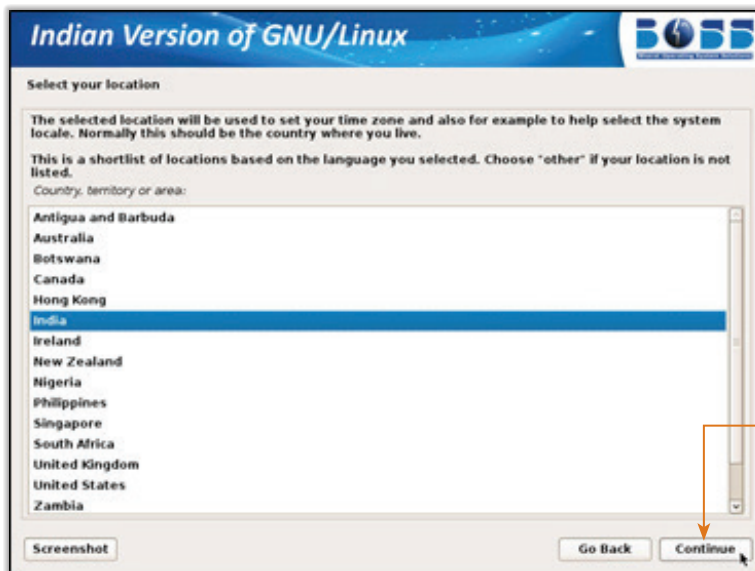
- 4 Click the **Continue** button as shown in Figure 3:



**Figure 3:** Select a Language Screen

The **Select your location** screen appears in which **India** is selected by default (Figure 4).

- 5 Click the **Continue** button, as shown in Figure 4:

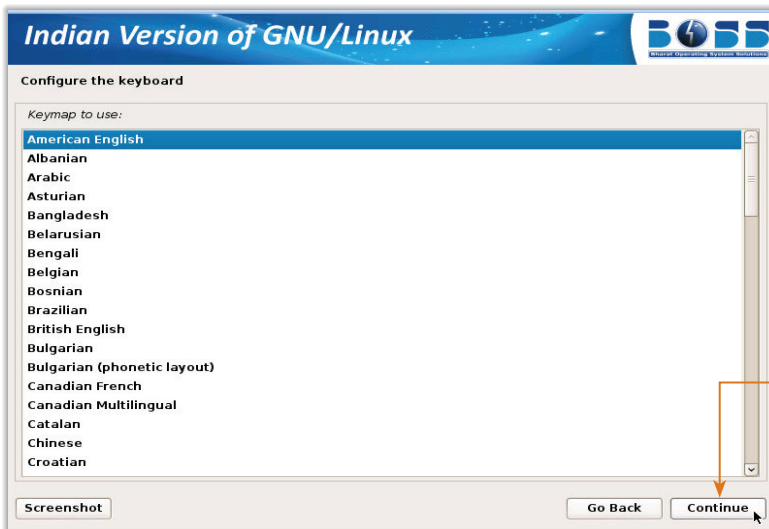


5 Clicking the Continue button

Figure 4: Selecting your location Screen

The Configure the keyboard screen appears in which American English is selected by default (Figure 5).

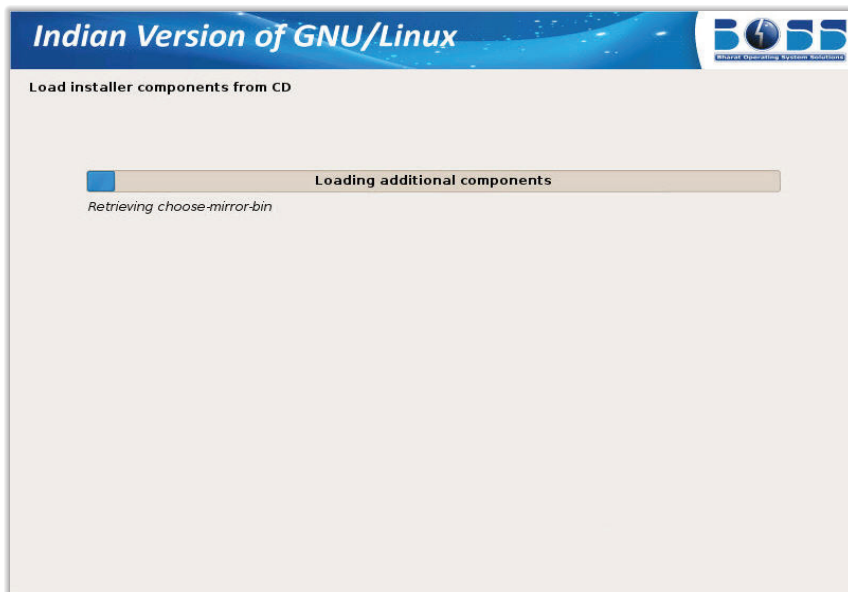
- 6 Click the **Continue** button, as shown in Figure 5:



6 Clicking the Continue button

Figure 5: Configure the Keyboard Screen

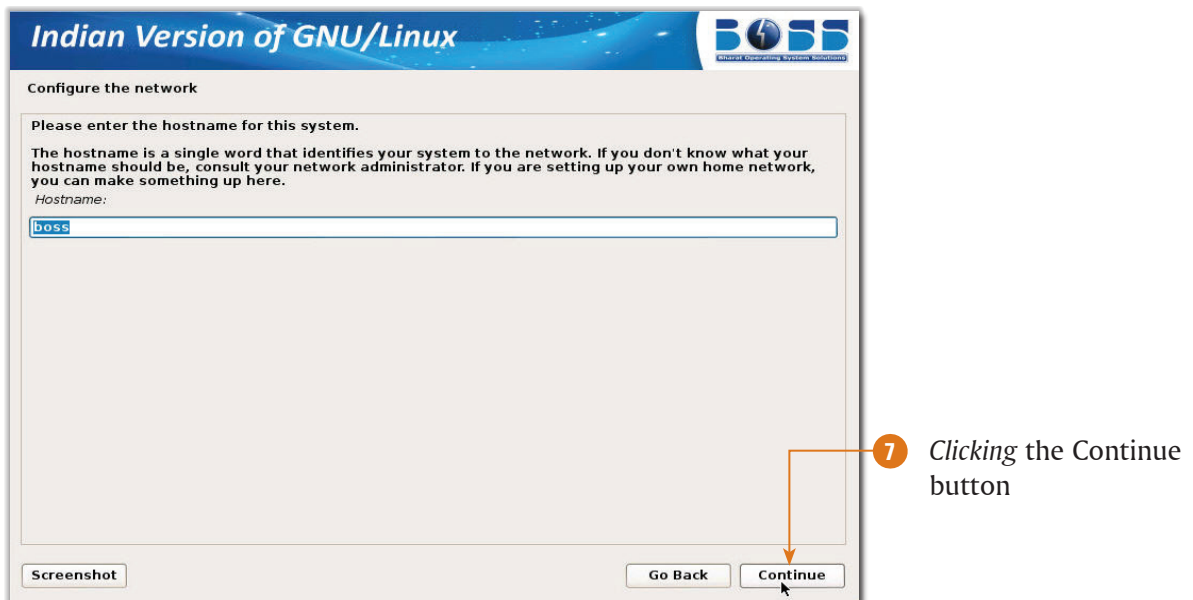
The Load Installer component from CD screen appears displaying the installation of components, as shown in Figure 6:



**Figure 6:** Load Installer component from CD screen

After the installation of components from CD, the **Configure the network** screen appears in which boss is written in the **Hostname:** textbox by default (Figure 7).

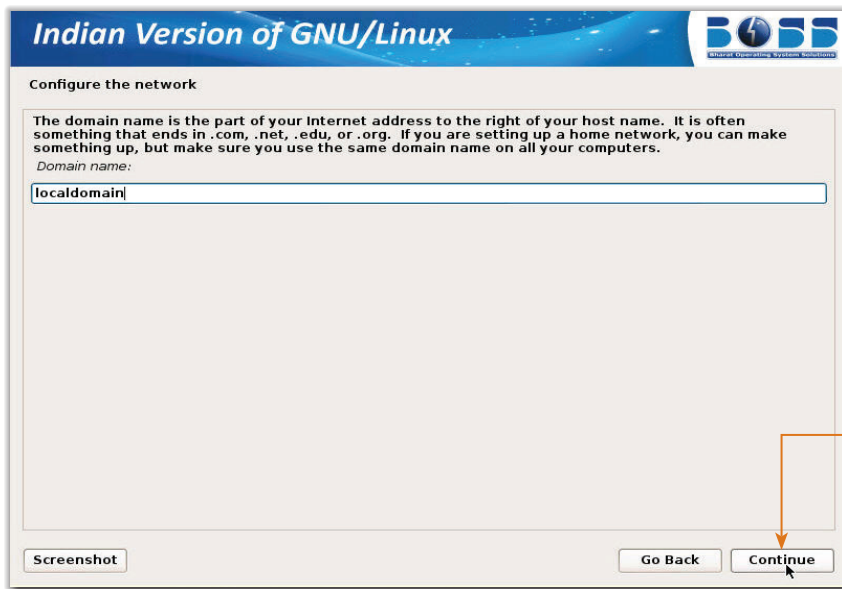
- 7 Click the **Continue** button, as shown in Figure 7:



**Figure 7:** Configure the network screen

The Domain name option appears in the Configure the network screen (Figure 8). The domain name depends upon the settings of your network. In our case, the domain name is **localdomain**.

- 8 Click the **Continue** button, as shown in Figure 8:

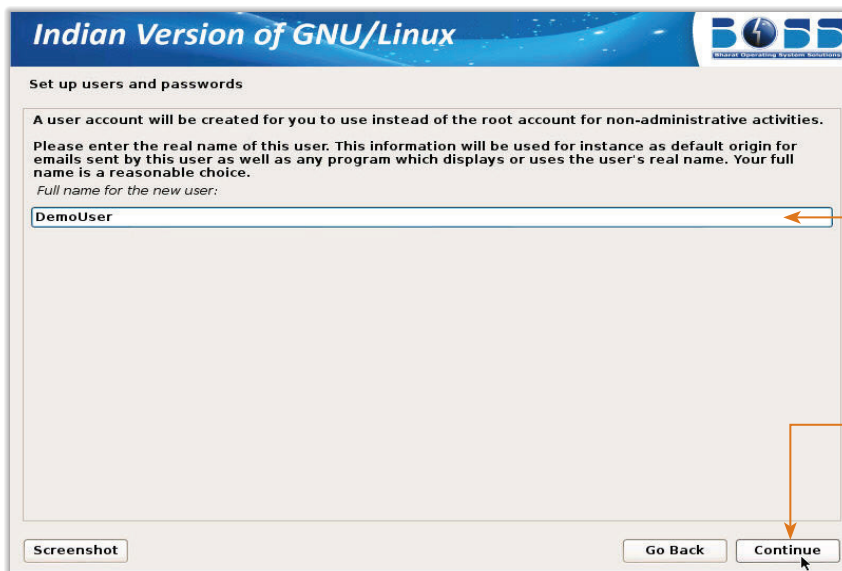


8 Clicking the Continue button

Figure 8: Domain name option

The Set up users and passwords screen appears (Figure 9).

- 9 Enter the appropriate name in the **Full name for the new user:** textbox. In our case, we have entered **DemoUser** in the textbox (Figure 9).
- 10 Click the **Continue** button, as shown in Figure 9:

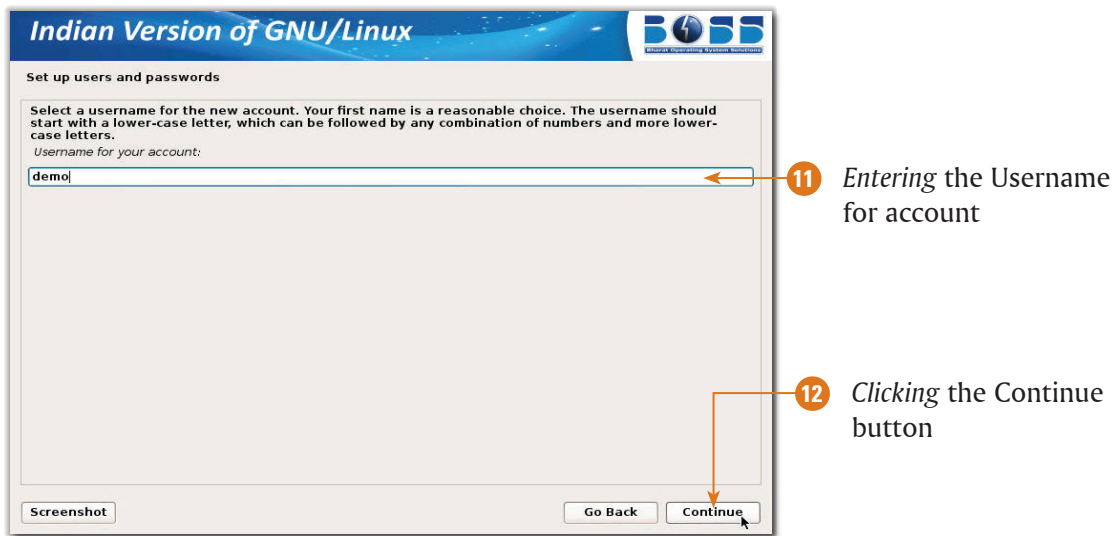


9 Entering the name

10 Clicking the Continue button

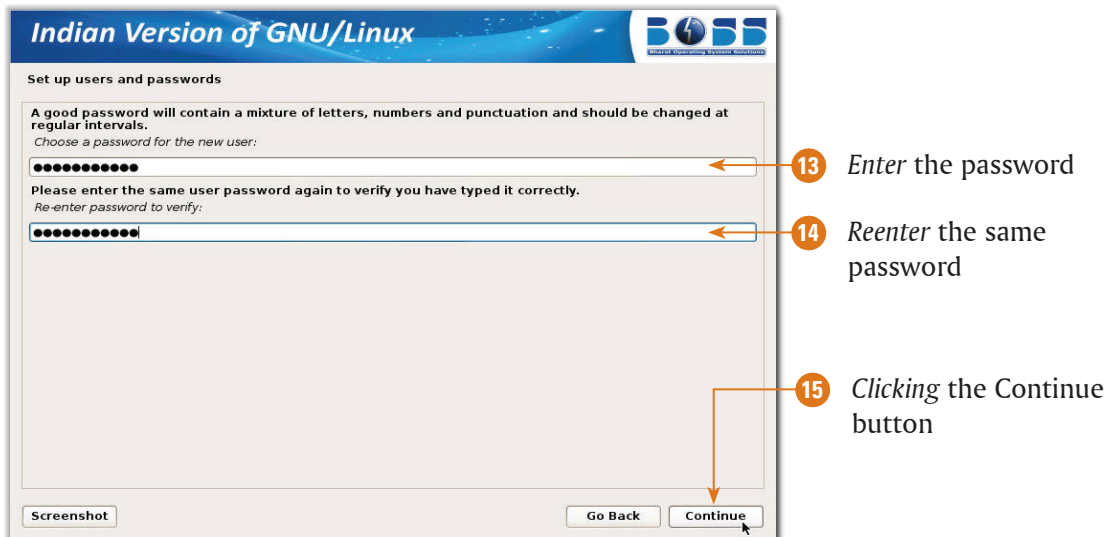
Figure 9: Set up users and passwords screen

- 11 Enter a suitable name in the **Username for your account:** textbox. In our case, we have entered **demo** in the textbox (Figure 10).
- 12 Click the **Continue** button, as shown in Figure 10:



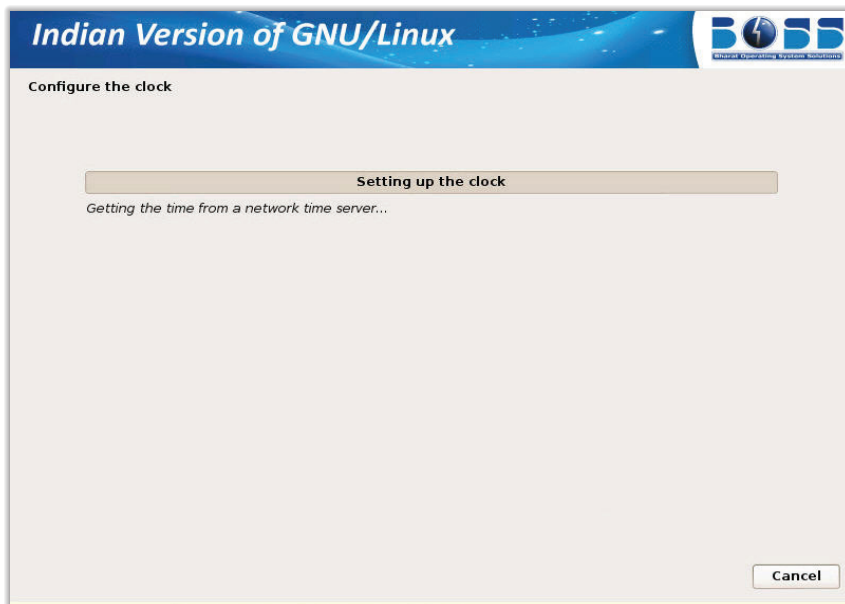
**Figure 10:** Entering the Username for account

- 13 Enter the appropriate password in the **Choose a password for the new user:** textbox (Figure 11).
- 14 Reenter the same password in the **Re-enter password to verify:** textbox (Figure 11).
- 15 Click the **Continue** button, as shown in Figure 11:



**Figure 11:** Setting the Password

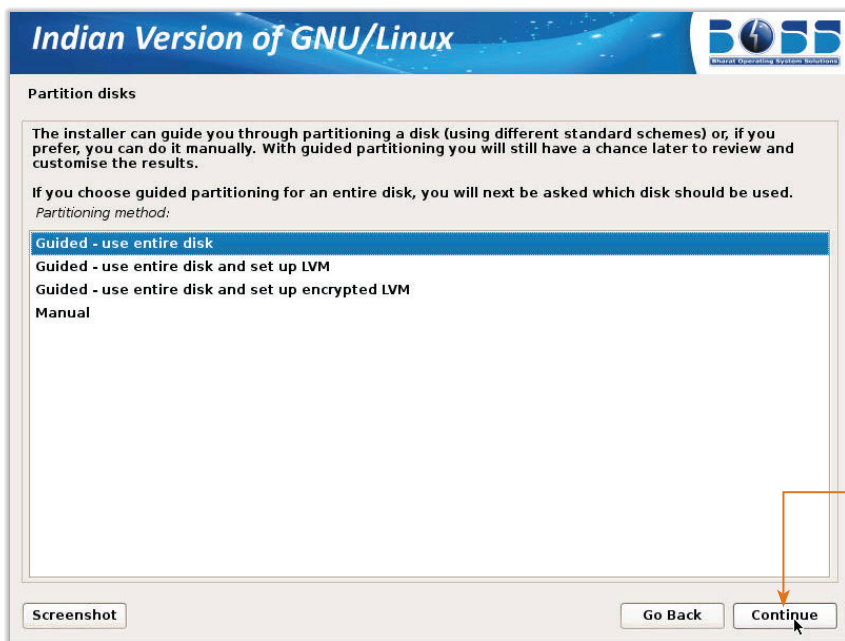
The **Configure the clock** screen appears, as shown in Figure 12:



**Figure 12:** Configuring the clock

After the completion of configuration, the **Partition disks** screen appears (Figure 13).

- 16 Click the **Continue** button, as shown in Figure 13:



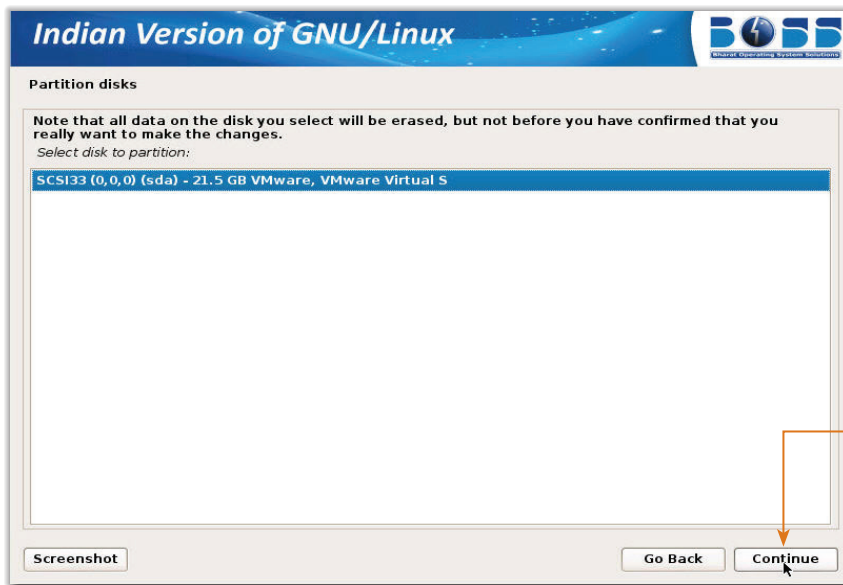
- 16 Clicking the Continue button

**Figure 13:** Partition Disks Screen

The **Select disk to partition:** option appears in Partition disks screen. In our case, we have used the default selected option (Figure 14).

- 17 Click the **Continue** button, as shown in Figure 14:



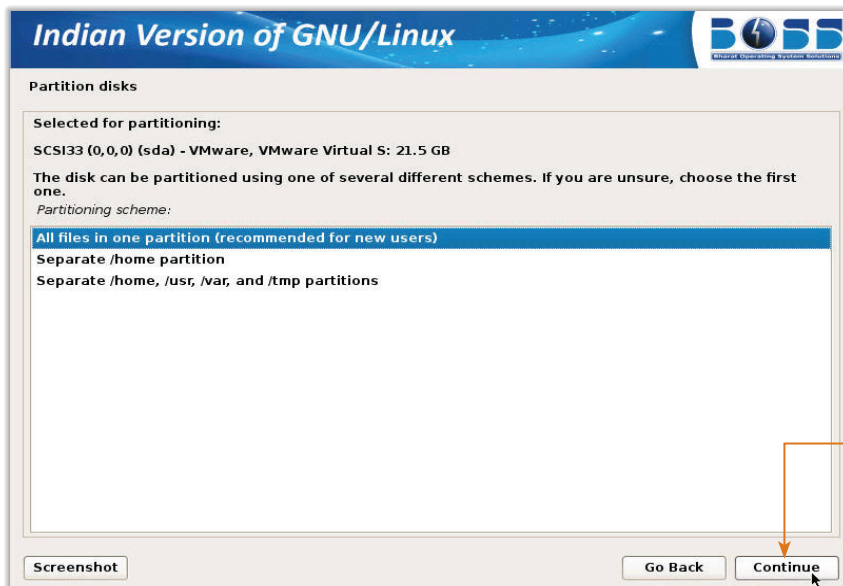


17 Clicking the Continue button

Figure 14: Partition Disks Screen

The **Selected for partitioning:** section appears in the Partition disks screen. In our case, we have used the default selected option (Figure 15).

- 18 Click the **Continue** button, as shown in Figure 15:



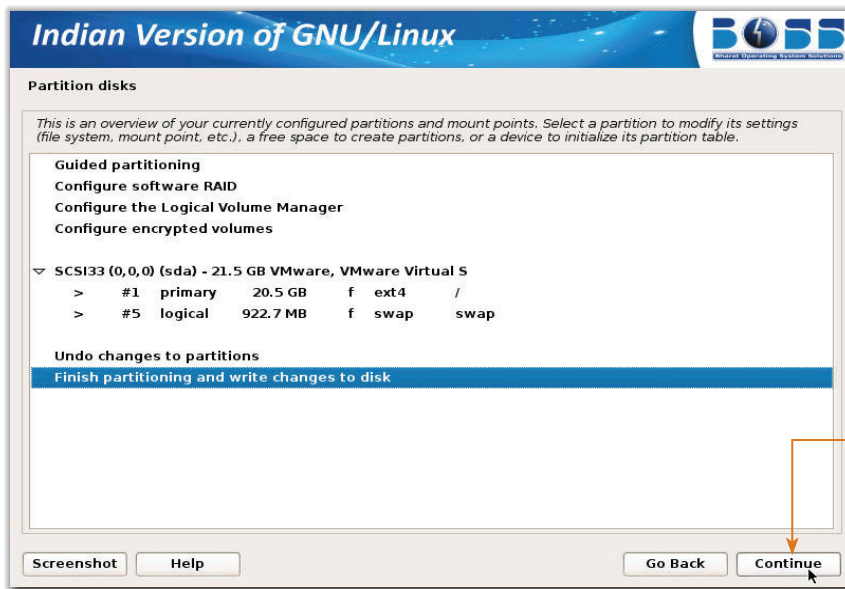
18 Clicking the Continue button

Figure 15: Partitioning disks Screen

The **Finish partitioning and write changes to disk** option appears selected by default in the Partition disks screen (Figure 16).

- 19 Click the **Continue** button, as shown in Figure 16:



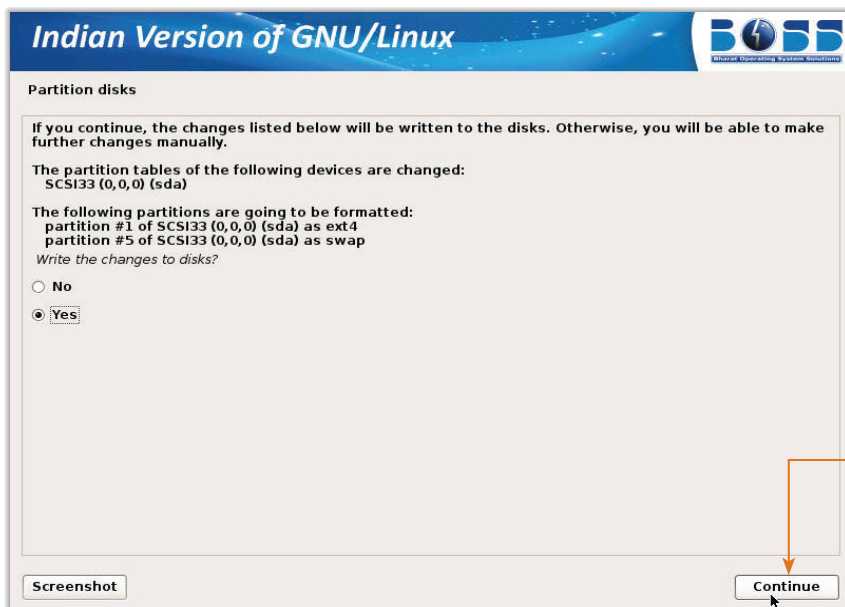


19 Clicking the Continue button

Figure 16: Partition disks Screen

By default, the **Yes** radio button appears selected in the Partition disks screen (Figure 17).

20 Click the **Continue** button, as shown in Figure 17:



20 Clicking the Continue button

Figure 17: Writing the Changes to Disks

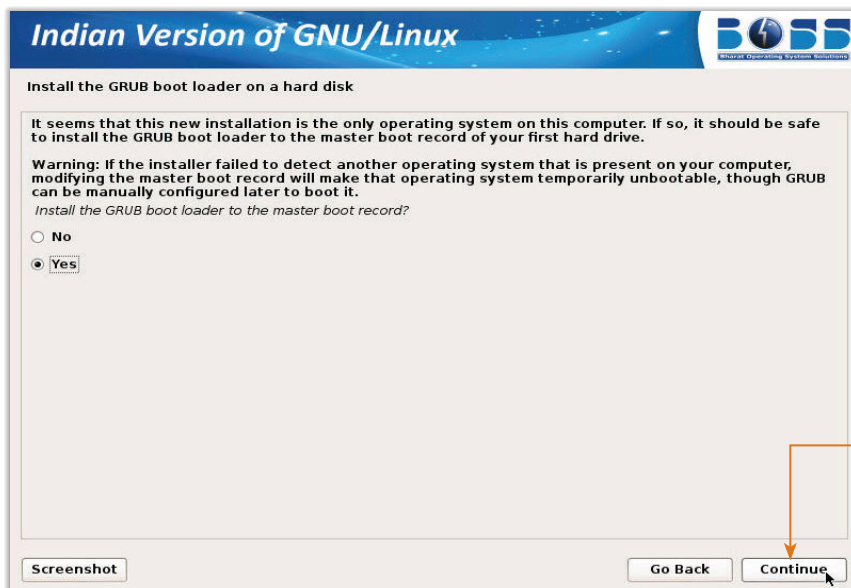
The **Install the system** screen appears showing the progress of the installation of BOSS Linux, as shown in Figure 18:



**Figure 18:** Install the system Screen

The **Install the GRUB boot loader on a hard disk** screen appears (Figure 19).

- 21 Select the **Yes** radio button (Figure 19).
- 22 Click the **Continue** button, as shown in Figure 19:



- 22 Clicking the **Continue** button

**Figure 19:** Install the GRUB boot loader on a hard disk Screen

The installation of the GRUB boot loader on a hard disk starts, as shown in Figure 20:



**Figure 20:** Installing the GRUB boot loader

Next, the **Finish the Installation** screen appears (Figure 21).

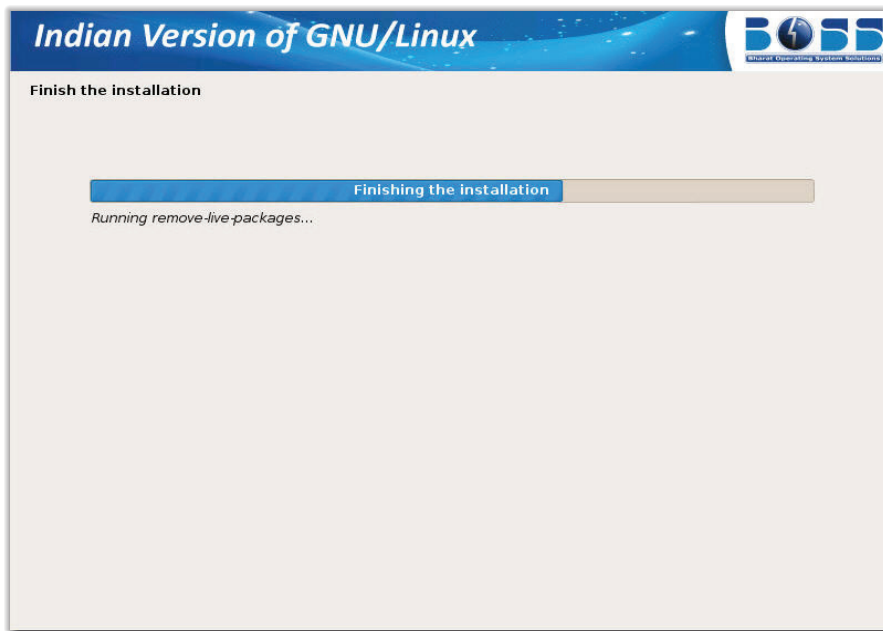
- 23 Click the **Continue** button, as shown in Figure 21:



- 23 Clicking the Continue button

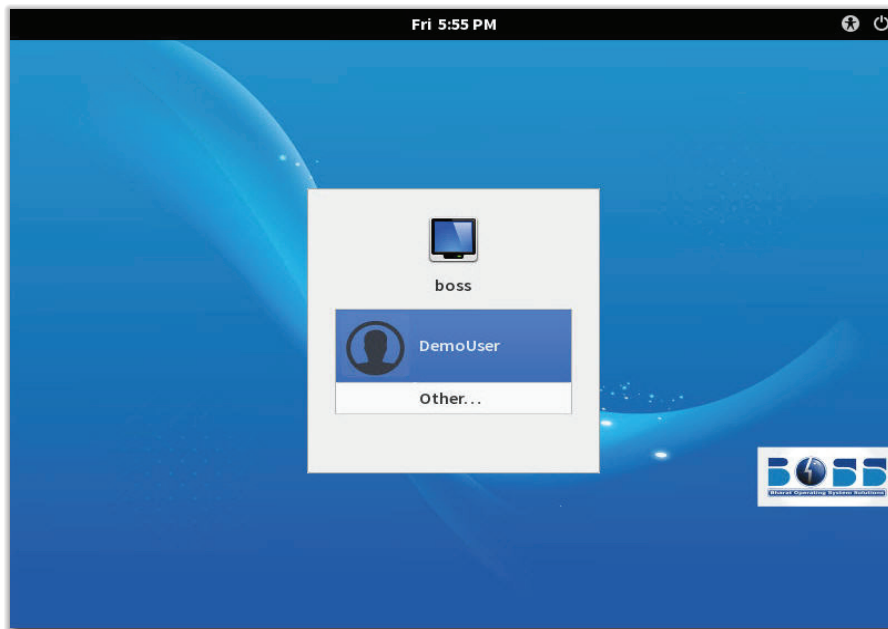
**Figure 21:** Finishing the Installation

The **Finish the Installation** screen appears showing the progress of installation, as shown in Figure 22:



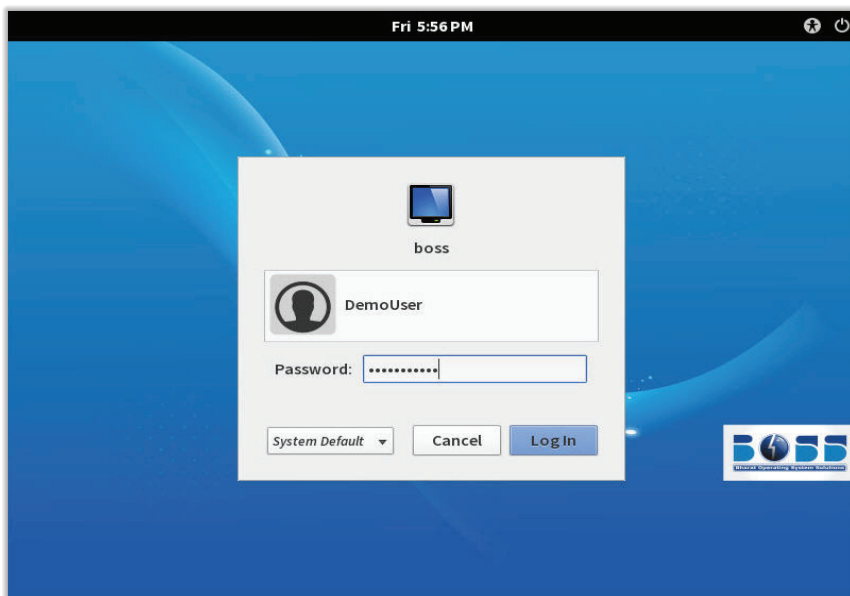
**Figure 22:** Finish the Installation Screen

The boss login screen appears, as shown in Figure 23:



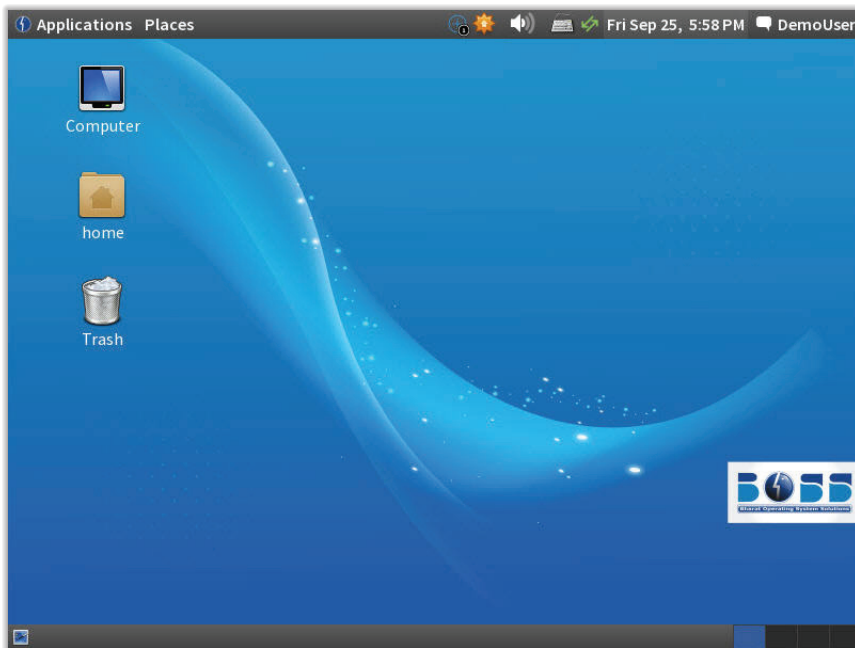
**Figure 23:** Displaying the Login Screen

- 24 Click the **DemoUser** account (Figure 24).  
The **Password:** textbox appears on the Login screen (Figure 24).
- 25 Enter the same password that you have saved during the installation (Figure 24).
- 26 Press the **Log In** button, as shown in Figure 24:



**Figure 24:** Entering the Password

The BOSS Linux desktop is shown in Figure 25:



**Figure 25:** BOSS Linux Desktop