

Installing the OpenOffice 4.1.1 Suite

The LibreOffice suite is installed by default during the installation of Boss Linux 5.0. Therefore, you need to first uninstall the LibreOffice suite, before installing the OpenOffice 4.1.1 suite. Moreover, your system must be connected to Internet for installing the OpenOffice 4.1.1 suite. Now, let's perform the following steps for installing the OpenOffice 4.1.1 suite on BOSS Linux 5.0:

- 1 Click the **Applications** menu on the desktop screen of BOSS Linux 5.0 (Figure 1).
- 2 Select the **Accessories**→**Terminal** option, as shown in Figure 1:

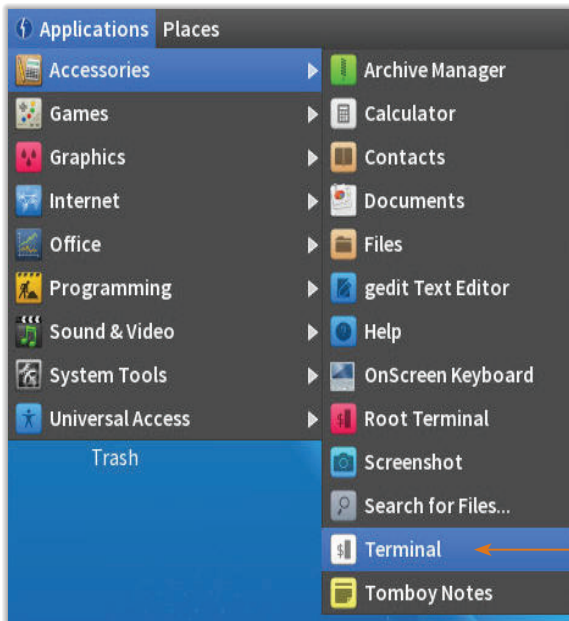


Figure 1: The Applications Menu

The **Terminal** Window appears (Figure 2).

- 3 Enter the following command in the Terminal window and press the Enter key (Figure 2):
`sudo apt-get remove libreoffice* openoffice*`
- 4 Enter the Password of your user account and press the Enter key. The entered password is not visible on your screen, as shown in Figure 2:

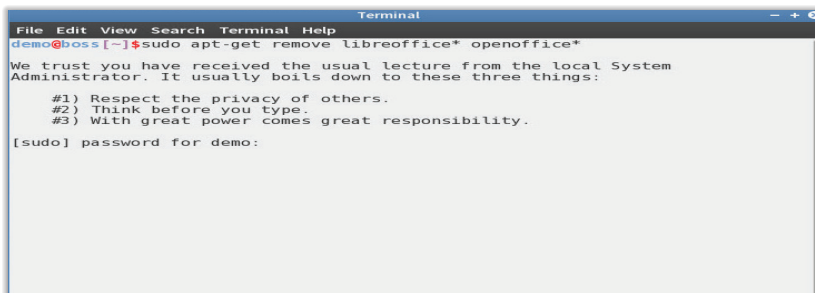


Figure 2: Entering the password

- 5 Enter y (or Y) in the Terminal Window to continue, as shown in Figure 3:

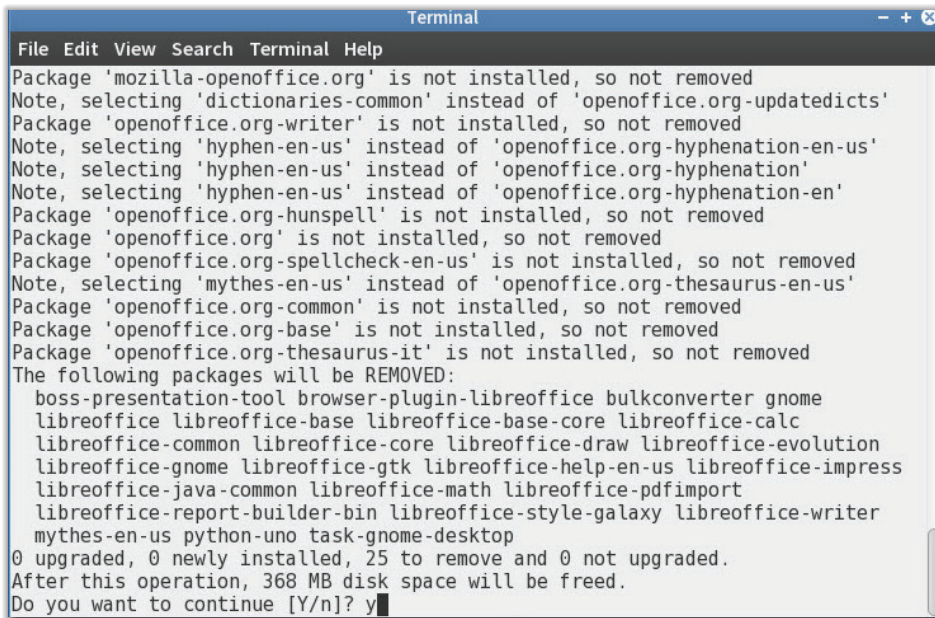
A terminal window titled "Terminal" with a menu bar (File, Edit, View, Search, Terminal, Help). The output shows a list of packages that are not installed and thus not removed, including mozilla-openoffice.org, dictionaries-common, openoffice.org-writer, hyphen-en-us, openoffice.org-hunspell, openoffice.org, openoffice.org-spellcheck-en-us, mythes-en-us, openoffice.org-common, openoffice.org-base, and openoffice.org-thesaurus-it. It then lists packages to be removed: boss-presentation-tool, browser-plugin-libreoffice, bulkconverter, gnome-libreoffice, libreoffice, libreoffice-base, libreoffice-base-core, libreoffice-calc, libreoffice-common, libreoffice-core, libreoffice-draw, libreoffice-evolution, libreoffice-gnome, libreoffice-gtk, libreoffice-help-en-us, libreoffice-impress, libreoffice-java-common, libreoffice-math, libreoffice-pdfimport, libreoffice-report-builder-bin, libreoffice-style-galaxy, libreoffice-writer, mythes-en-us, python-uno, and task-gnome-desktop. It states 0 upgraded, 0 newly installed, 25 to remove, and 0 not upgraded, with 368 MB disk space to be freed. It asks "Do you want to continue [Y/n]?" and the user has entered 'y'.

Figure 3: Entering y to continue

- 6 Enter the following command for installing the OpenOffice suite and press the Enter key (Figure 4):

```
wget sourceforge.net/projects/openofficeorg.mirror/files/4.1.1/binaries/  
en-GB/Apache_OpenOffice_4.1.1_Linux_x86-64_install-deb_en-GB.tar.gz
```

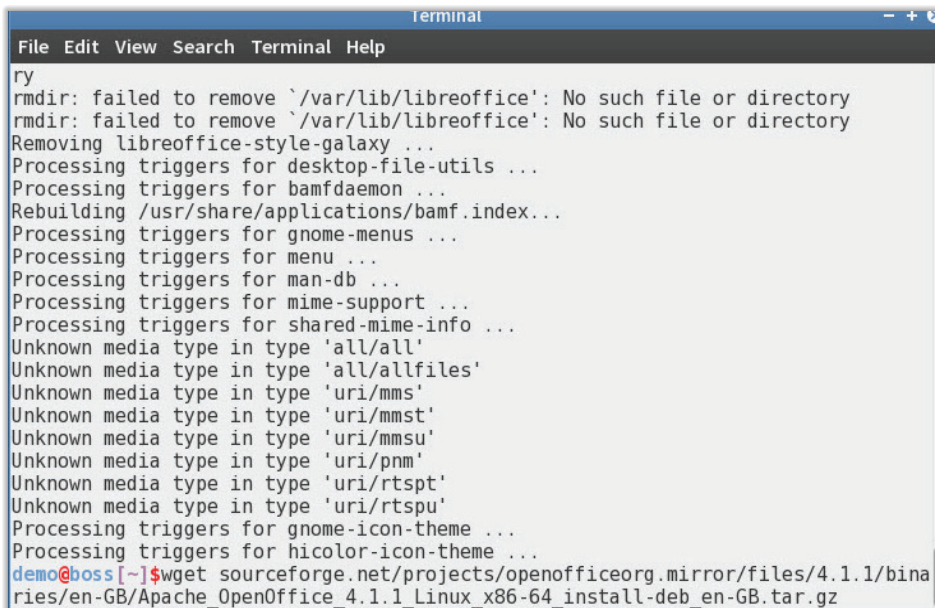
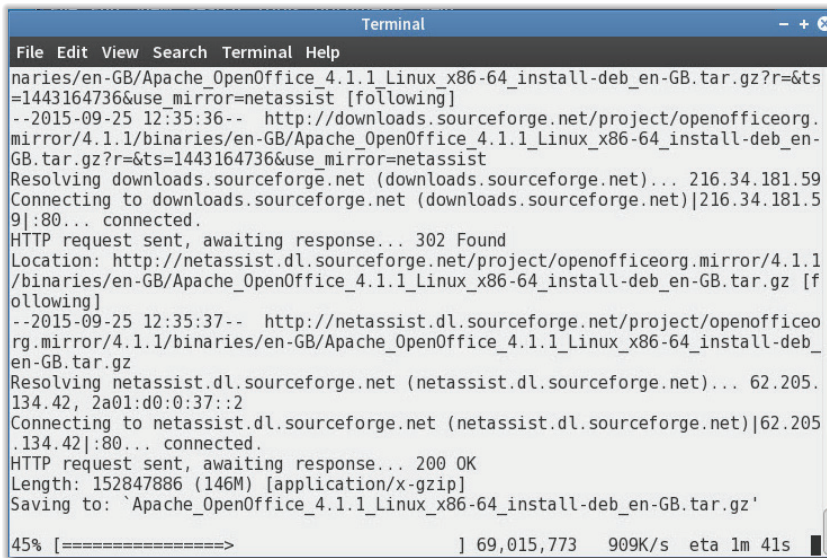
A terminal window titled "Terminal" with a menu bar (File, Edit, View, Search, Terminal, Help). The output shows the removal of old LibreOffice packages and the installation of OpenOffice 4.1.1. It lists various triggers being processed, such as desktop-file-utils, bamfdaemon, gnome-menus, menu, man-db, mime-support, and shared-mime-info. It also shows unknown media types being added. The command to download the OpenOffice 4.1.1 binaries is entered: `wget sourceforge.net/projects/openofficeorg.mirror/files/4.1.1/binaries/en-GB/Apache_OpenOffice_4.1.1_Linux_x86-64_install-deb_en-GB.tar.gz`.

Figure 4: Installing OpenOffice 4.1.1

The installation of OpenOffice 4.1.1 suite starts, as shown in Figure 5:



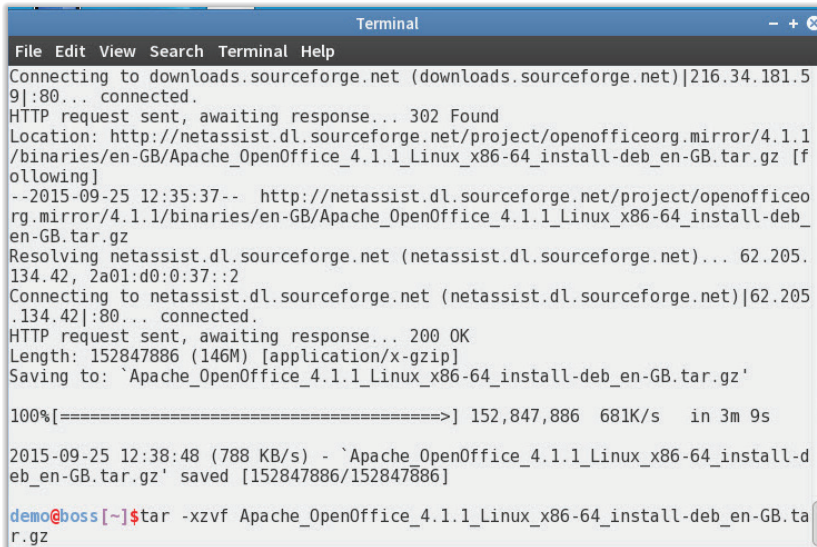
```

naries/en-GB/Apache_OpenOffice_4.1.1_Linux_x86-64_install-deb_en-GB.tar.gz?r=&ts
=1443164736&use_mirror=netassist [following]
--2015-09-25 12:35:36-- http://downloads.sourceforge.net/project/openofficeorg.
mirror/4.1.1/binaries/en-GB/Apache_OpenOffice_4.1.1_Linux_x86-64_install-deb_en-
GB.tar.gz?r=&ts=1443164736&use_mirror=netassist
Resolving downloads.sourceforge.net (downloads.sourceforge.net)... 216.34.181.59
Connecting to downloads.sourceforge.net (downloads.sourceforge.net)|216.34.181.5
9|:80... connected.
HTTP request sent, awaiting response... 302 Found
Location: http://netassist.dl.sourceforge.net/project/openofficeorg.mirror/4.1.1
/binaries/en-GB/Apache_OpenOffice_4.1.1_Linux_x86-64_install-deb_en-GB.tar.gz [f
ollowing]
--2015-09-25 12:35:37-- http://netassist.dl.sourceforge.net/project/openofficeo
rg.mirror/4.1.1/binaries/en-GB/Apache_OpenOffice_4.1.1_Linux_x86-64_install-deb
_en-GB.tar.gz
Resolving netassist.dl.sourceforge.net (netassist.dl.sourceforge.net)... 62.205.
134.42, 2a01:d0:0:37::2
Connecting to netassist.dl.sourceforge.net (netassist.dl.sourceforge.net)|62.205
.134.42|:80... connected.
HTTP request sent, awaiting response... 200 OK
Length: 152847886 (146M) [application/x-gzip]
Saving to: `Apache_OpenOffice_4.1.1_Linux_x86-64_install-deb_en-GB.tar.gz'
45% [=====>] 69,015,773 909K/s eta 1m 41s
```

Figure 5: Displaying the Installation Progress

- Enter the following command for continuing the OpenOffice 4.1.1 installation process and press the Enter key (Figure 6):

```
tar -xzvf Apache_OpenOffice_4.1.1_Linux_x86-64_install-deb_en-GB.tar.gz
```



```

Connecting to downloads.sourceforge.net (downloads.sourceforge.net)|216.34.181.5
9|:80... connected.
HTTP request sent, awaiting response... 302 Found
Location: http://netassist.dl.sourceforge.net/project/openofficeorg.mirror/4.1.1
/binaries/en-GB/Apache_OpenOffice_4.1.1_Linux_x86-64_install-deb_en-GB.tar.gz [f
ollowing]
--2015-09-25 12:35:37-- http://netassist.dl.sourceforge.net/project/openofficeo
rg.mirror/4.1.1/binaries/en-GB/Apache_OpenOffice_4.1.1_Linux_x86-64_install-deb
_en-GB.tar.gz
Resolving netassist.dl.sourceforge.net (netassist.dl.sourceforge.net)... 62.205.
134.42, 2a01:d0:0:37::2
Connecting to netassist.dl.sourceforge.net (netassist.dl.sourceforge.net)|62.205
.134.42|:80... connected.
HTTP request sent, awaiting response... 200 OK
Length: 152847886 (146M) [application/x-gzip]
Saving to: `Apache_OpenOffice_4.1.1_Linux_x86-64_install-deb_en-GB.tar.gz'
100%[=====>] 152,847,886 681K/s in 3m 9s

2015-09-25 12:38:48 (788 KB/s) - `Apache_OpenOffice_4.1.1_Linux_x86-64_install-d
eb_en-GB.tar.gz' saved [152847886/152847886]

demo@boss[~]$tar -xzvf Apache_OpenOffice_4.1.1_Linux_x86-64_install-deb_en-GB.ta
r.gz
```

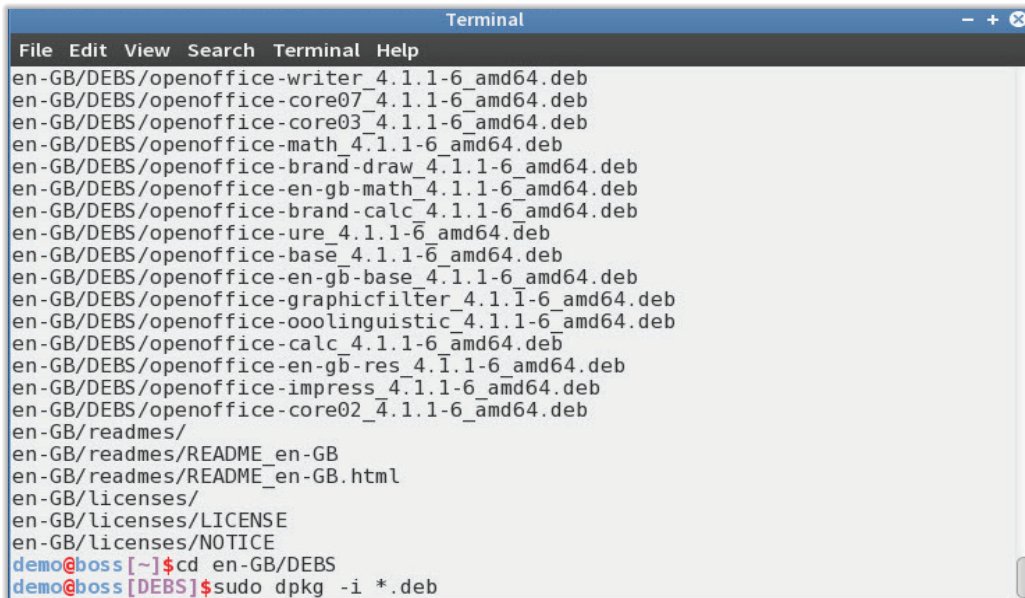
Figure 6: Entering the Command

- Enter the following command and press the Enter key (Figure 7).

```
cd en-GB/DEBS
```

- Enter the following command and press the Enter key (Figure 7):

```
sudo dpkg -i *.deb
```

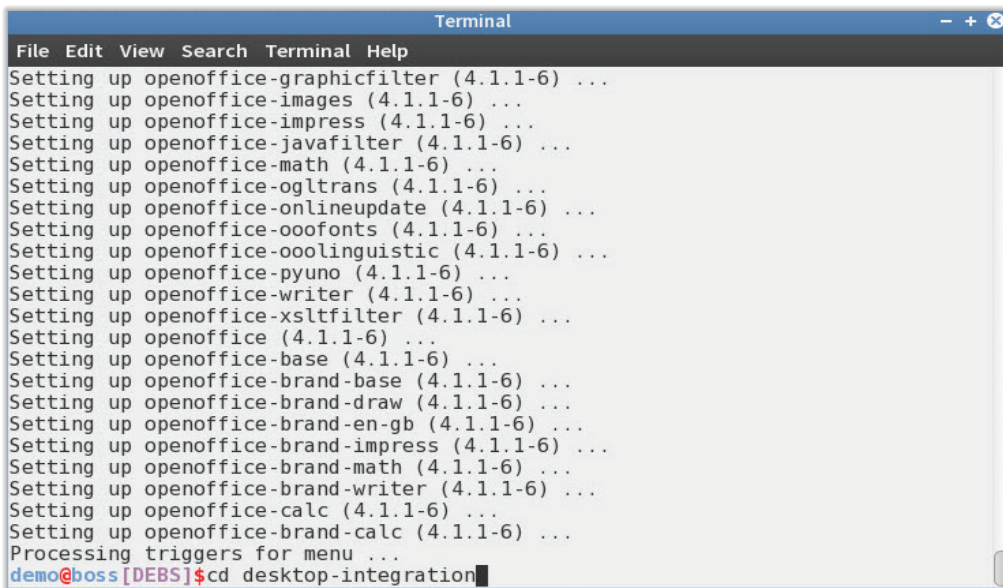



```
en-GB/DEBS/openoffice-writer_4.1.1-6_amd64.deb
en-GB/DEBS/openoffice-core07_4.1.1-6_amd64.deb
en-GB/DEBS/openoffice-core03_4.1.1-6_amd64.deb
en-GB/DEBS/openoffice-math_4.1.1-6_amd64.deb
en-GB/DEBS/openoffice-brand-draw_4.1.1-6_amd64.deb
en-GB/DEBS/openoffice-en-gb-math_4.1.1-6_amd64.deb
en-GB/DEBS/openoffice-brand-calc_4.1.1-6_amd64.deb
en-GB/DEBS/openoffice-ure_4.1.1-6_amd64.deb
en-GB/DEBS/openoffice-base_4.1.1-6_amd64.deb
en-GB/DEBS/openoffice-en-gb-base_4.1.1-6_amd64.deb
en-GB/DEBS/openoffice-graphicfilter_4.1.1-6_amd64.deb
en-GB/DEBS/openoffice-oolinguistic_4.1.1-6_amd64.deb
en-GB/DEBS/openoffice-calc_4.1.1-6_amd64.deb
en-GB/DEBS/openoffice-en-gb-res_4.1.1-6_amd64.deb
en-GB/DEBS/openoffice-impress_4.1.1-6_amd64.deb
en-GB/DEBS/openoffice-core02_4.1.1-6_amd64.deb
en-GB/readmes/
en-GB/readmes/README_en-GB
en-GB/readmes/README_en-GB.html
en-GB/licenses/
en-GB/licenses/LICENSE
en-GB/licenses/NOTICE
demo@boss[~]$ cd en-GB/DEBS
demo@boss[DEBS]$ sudo dpkg -i *.deb
```

Figure 7: Commands for Installing OpenOffice 4.1.1 suite

- 10 Enter the following command for desktop integration and press the Enter key (Figure 8):

```
cd desktop-integration
```



```
Setting up openoffice-graphicfilter (4.1.1-6) ...
Setting up openoffice-images (4.1.1-6) ...
Setting up openoffice-impress (4.1.1-6) ...
Setting up openoffice-javafilter (4.1.1-6) ...
Setting up openoffice-math (4.1.1-6) ...
Setting up openoffice-ogltrans (4.1.1-6) ...
Setting up openoffice-onlineupdate (4.1.1-6) ...
Setting up openoffice-ooofonts (4.1.1-6) ...
Setting up openoffice-oolinguistic (4.1.1-6) ...
Setting up openoffice-pyuno (4.1.1-6) ...
Setting up openoffice-writer (4.1.1-6) ...
Setting up openoffice-xsltfilter (4.1.1-6) ...
Setting up openoffice (4.1.1-6) ...
Setting up openoffice-base (4.1.1-6) ...
Setting up openoffice-brand-base (4.1.1-6) ...
Setting up openoffice-brand-draw (4.1.1-6) ...
Setting up openoffice-brand-en-gb (4.1.1-6) ...
Setting up openoffice-brand-impress (4.1.1-6) ...
Setting up openoffice-brand-math (4.1.1-6) ...
Setting up openoffice-brand-writer (4.1.1-6) ...
Setting up openoffice-calc (4.1.1-6) ...
Setting up openoffice-brand-calc (4.1.1-6) ...
Processing triggers for menu ...
demo@boss[DEBS]$ cd desktop-integration
```

Figure 8: Command for Desktop Integration

- 11 Enter the command for finalizing the installation of OpenOffice 4.1.1 suite and press the Enter key:

```
sudo dpkg -i *.deb
```
- 12 Close the Terminal window.

- 13 Open the **Applications** menu and then Select the **Office** submenu. The OpenOffice 4.1.1 suite is installed successfully on your system, as shown in Figure 9:

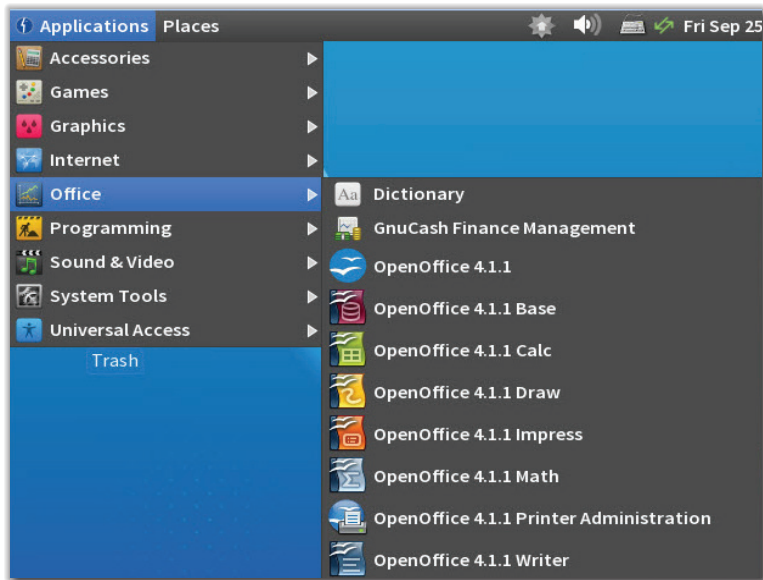


Figure 9: Displaying the OpenOffice 4.1.1 suite