

# Installation Guide

## Installing LibreOffice 25.8.3

LibreOffice is an office application suite that provides various tools such as Writer, Calc, Base, Impress, Draw, and Math. You can use these applications according to your requirements. If you are currently using an older version of LibreOffice, for example, LibreOffice 25.2.7, you can directly upgrade it to LibreOffice 25.8.3 instead of uninstalling the older version and then installing the new version. Upgrading to LibreOffice 25.8.3 from an older version takes less time and effort.

If you do not have any older version of LibreOffice installed on your system, you can install LibreOffice 25.8.3 as a fresh installation. However, before installing LibreOffice 25.8.3 on your computer, you need to check the minimum system requirements to ensure that your system supports LibreOffice 25.8.3.

### System Requirement

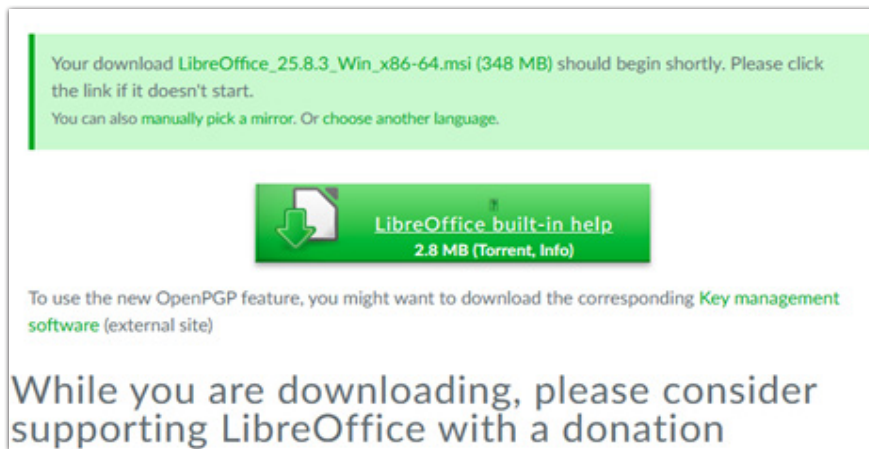
The minimum system requirements to install the LibreOffice 25.8.3 are as follows:

COMPONENT	WINDOWS REQUIREMENT	MACOS REQUIREMENT
Memory	256 MB RAM (512 MB recommended)	512 MB RAM
Hard Disk	Up to 1.5 GB free hard disk space	Up to 800 MB free hard disk space
Display	1280×800 resolution or higher, with at least 256 colours	1280×800 resolution or higher, with at least 256 colours
Operating System	Windows Server 2012–2022, Windows 10, Windows 11	macOS 11 or newer
Processor	Pentium-compatible PC (Pentium III, Athlon, or newer recommended)	Intel or Apple Silicon processor
Other Software	Java Runtime Environment (JRE) required for certain features, especially Base	JRE required for some features (Base); JDK required on macOS 10.10 and newer

### Install OpenOffice 4.1.7 Suite

Perform the following steps to install the LibreOffice 25.8.3 suite in Windows:

- 1 Go to the hyperlink [https://www.libreoffice.org/donate/dl/win-x86\\_64/25.8.3/en-US/LibreOffice\\_25.8.3\\_Win\\_x86-64.msi](https://www.libreoffice.org/donate/dl/win-x86_64/25.8.3/en-US/LibreOffice_25.8.3_Win_x86-64.msi) to download the LibreOffice 25.8.3 suite.
- 2 Click the **LibreOffice built-in help button** as shown in Figure 1, if the download doesn't start automatically.



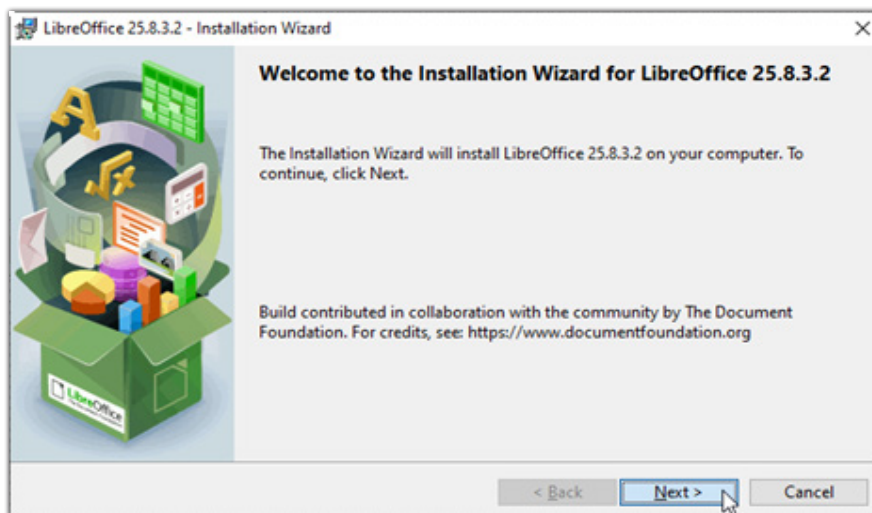
**Figure 1:** LibreOffice built-in help button

Wait until the **LibreOffice 25.8.3** suite gets downloaded. When the **LibreOffice 25.8.3** file gets downloaded, open the folder.

- 3 Double-click the **LibreOffice\_25.8.3\_Win\_x86-64** file to start the installation. The **LibreOffice 25.8.3.2 – Installation Wizard** dialog box appears (Figure 2).

The **Welcome to OpenOffice 4.1.7 Setup** page appears on the **OpenOffice 4.1.7 Setup** wizard (Figure 1).

- 4 Click the **Next** button after the computation for the space requirement finishes, as shown in Figure 2:



**Figure 2:** Displaying the LibreOffice 25.8.3.2 – Installation Wizard Dialog Box

The **Choose Install Location** page appears on the **OpenOffice 4.1.7 Setup** wizard (Figure 2).

- 5 The **Setup Type** page appears on the **LibreOffice 25.8.3.2 – Installation Wizard** dialog box (Figure 3).
- 6 Select the type of installation that suites you according to your need. For this guide, we kept the default option which is **Typical** as our setup type.

- 7 Click the **Next** button as shown in Figure 3:

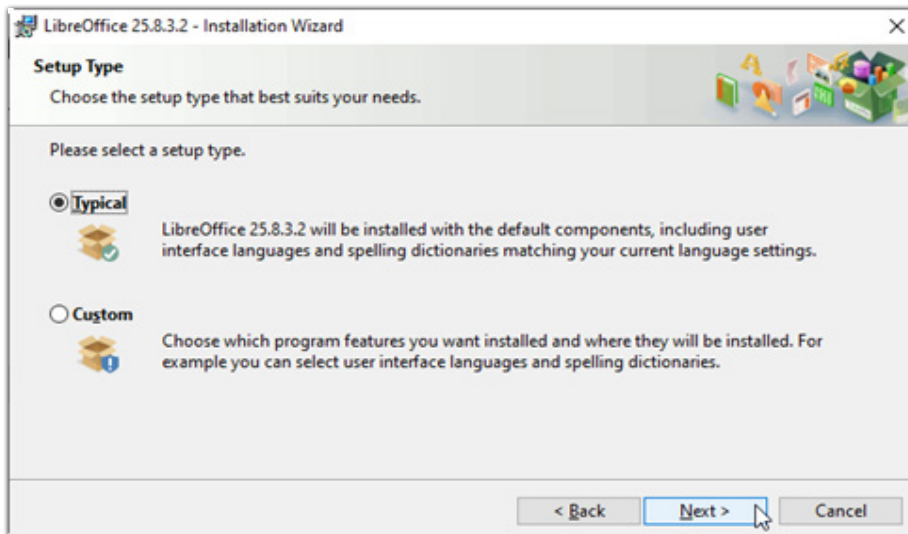


Figure 3: Displaying the Setup Type Page

The **Ready to Install the Program** page appears on **LibreOffice 25.8.3.2 – Installation Wizard** dialog box (Figure 4).

- 8 Select the **Create a shortcut on desktop** option as shown in Figure 4:

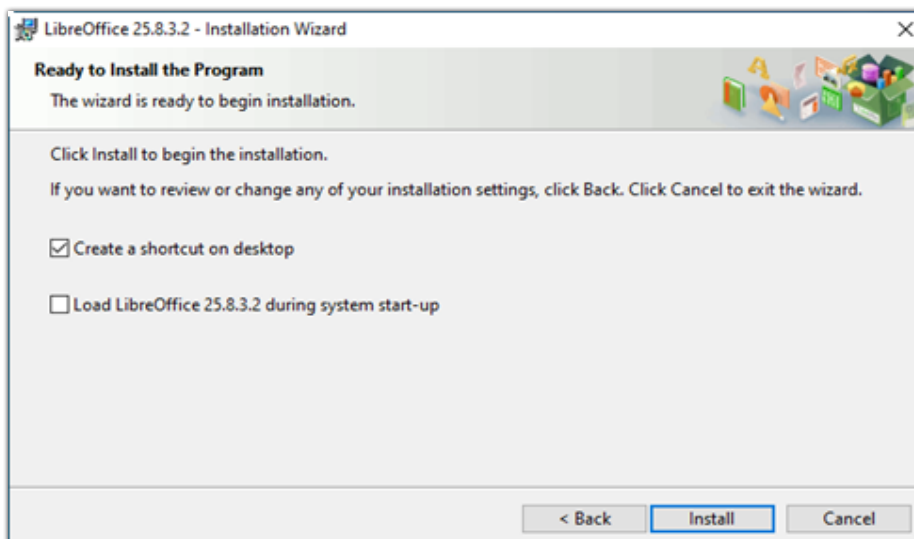
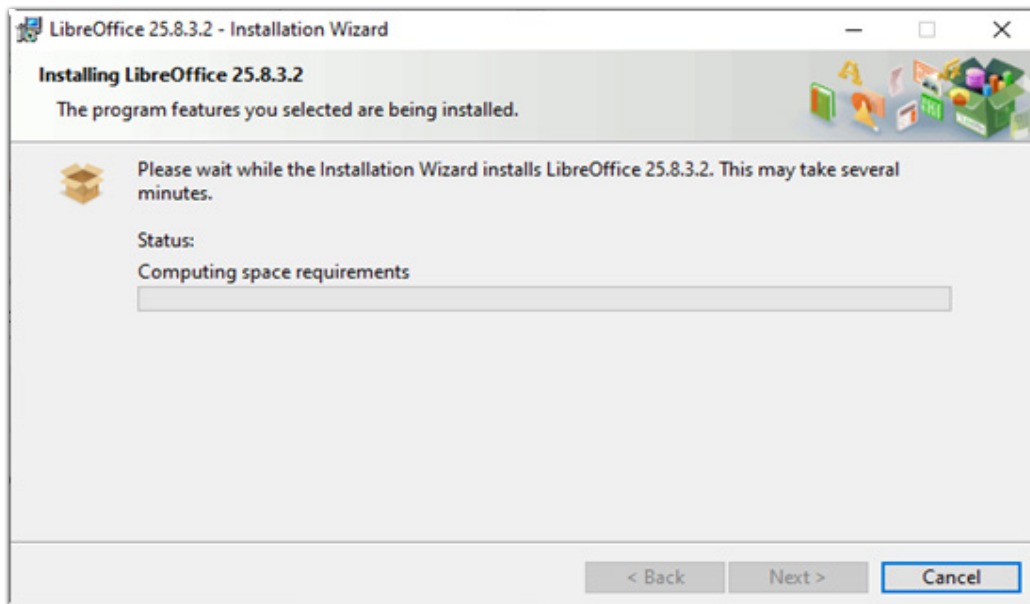


Figure 4: Selecting Create a shortcut on desktop Radio Button

You can also check the **Load LibreOffice 25.8.3.2 on system startup** if you want to load LibreOffice during Startup.

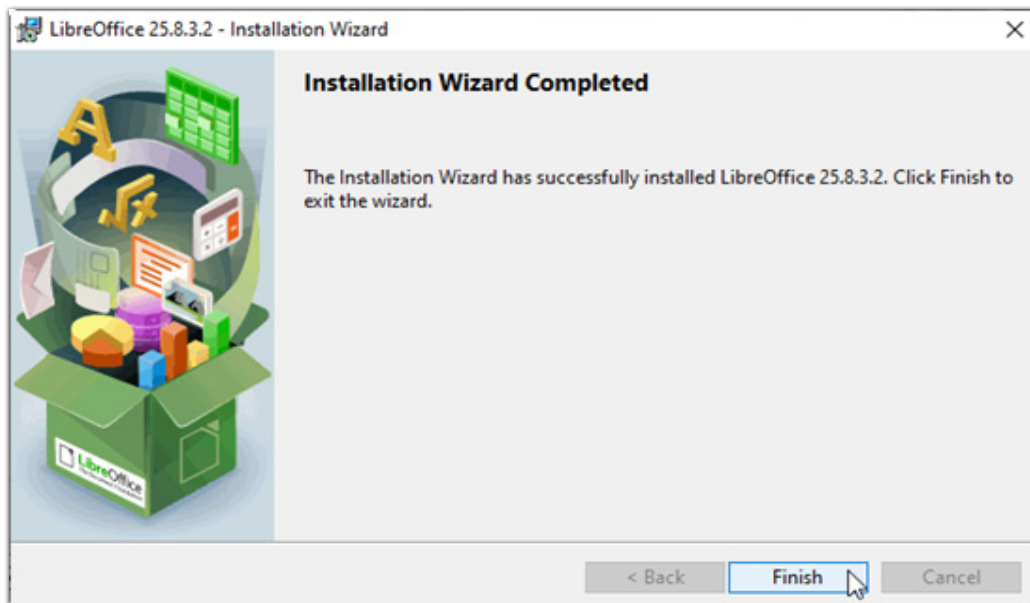
- 9 Click the **Install** button to start the installation. The **Installing LibreOffice 25.8.3.2** page appears on **LibreOffice 25.8.3.2 – Installation Wizard** that shows the installation progress of LibreOffice 25.8.3.2, as shown in Figure 5:



**Figure 5:** Displaying the Installation Process

After the installation process is completed, the **Installation Wizard Completed** page appears on **LibreOffice 25.8.3.2 – Installation Wizard** (Figure 6).

- 10 Click the **Finish** button, as shown in Figure 6:



**Figure 6:** Finishing the Installation Process

Now, you can use the various applications of LibreOffice 25.8.3.2 installed in your computer system.